

FROM PROCESS TO PRINT
GRAPHIC WORKS BY

ROMARE BEARDEN

organized by the
ROMARE BEARDEN
FOUNDATION



*National Museum Tour
2009 - 2012*

FROM PROCESS TO PRINT: GRAPHIC WORKS BY ROMARE BEARDEN

TRAVELING EXHIBITION AVAILABLE

The Romare Bearden Foundation, a New York based public foundation dedicated to the legacy of preeminent American artist, Romare Bearden (1911-1988), has organized the exhibition FROM PROCESS TO PRINT: GRAPHIC WORKS BY ROMARE BEARDEN for a three year national tour. The exhibition presents a selected body of prints that examines the ways that Bearden experimented, innovated, and collaborated on his journey toward mastery of the print medium. The exhibition includes seventy-five lithographs, etchings, collographs, collograph plates, screen prints, dry-points, aquatints, photo projections, monoprints, and engravings, all created over a span of thirty years. They demonstrate, in part, how Bearden extended his artistic imagination beyond the collages and photomontages that inspired many of the works. The exhibition was curated by Pamela Ford, former program director, at the Bearden Foundation.

The exhibition follows several major shows of Bearden's work, including the groundbreaking retrospective, THE ART OF ROMARE BEARDEN, organized by the National Gallery of Art, Washington, D.C. FROM PROCESS TO PRINT is important for examining in depth the significance of prints in Bearden's oeuvre, for offering new perspectives from contemporary scholars and artists/practitioners, for bringing the research up to date, and in many instances, correcting the past record on titles, attributions, and techniques.

As Grace C. Stanislaus, the President of the Foundation noted, "For Bearden, the process of making art was as important as the product that resulted. While this is especially true of his collages, for which he is an acknowledged master, it is equally true about his graphic works."

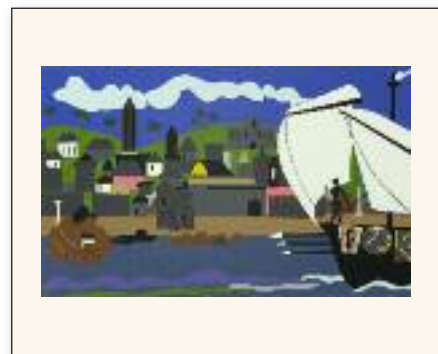
The exhibition offers a unique opportunity to examine Bearden's print making process as he worked and re-worked a particular image, theme or technique, to consider how his thinking and approaches were shaped through collaborations with master printmakers and to understand how key themes and motifs like trains, family life, rituals, urban scenes, jazz, and mythology extended his artistic imagination from collage into other media. The works in the exhibition show Bearden's extraordinary facility for weaving into every art form a rich tapestry of literary, biblical, mythological, popular culture and western and non-western themes that were informed by his African American cultural experiences. Included are prints based on collages like the *Odysseus Series* and *Piano Lesson* that he reworked in several media through changes in technique, scale and color and through the use of photographic processes. Also included are two important photoengraving series, *The Train* and *The Family* and the extraordinary limited edition *12 Trains*. John Loring writing in *Arts Magazine* in 1973 proclaimed *The Family* as one of the most important prints of the time.



Romare Bearden, 1980
photo by Marvin E. Newman



Romare Bearden
The Family, 1975
Etching



Romare Bearden
Home to Ithaca, 1979
from the *Odysseus Suite*
Serigraph

A full color, 140 page catalogue published and distributed by Pomegranate Communications accompanies the exhibition and includes: a foreword by Grace C. Stanislaus; a seminal essay by Mary Lee Corlett, Research Associate, Special Projects in Modern Art at the National Gallery of Art, Washington, DC and interviews with master printmakers and Bearden collaborators, Kathleen Caraccio and Mohammad Khalil.

Romare Bearden (1911-1988), an American artist of African American heritage, was honored during his lifetime and posthumously with numerous prestigious awards, publications and exhibitions. Along with representation in important public and private collections, he was awarded the National Medal of Arts and honored with a groundbreaking retrospective exhibition at the National Gallery of Art. A master collagist, Bearden is celebrated today as a preeminent, highly prolific artist of exceptional and multifaceted talents and interests. He was a jazz aficionado, an author of scholarly books, a song writer/lyricist as well an arts activist and an engaged humanist. Bearden incorporated into his art work a rich montage of influences from American, African, Asian and European art and culture and took inspiration from memories and experiences of the rural South, the urban North and the Caribbean.

The Romare Bearden Foundation, a New York based nonprofit organization, preserves, perpetuates and make publicly accessible Romare Bearden's rich artistic and intellectual legacy through its programs. Beyond the material legacy, which includes Bearden's art, archives and literary works, the Foundation has built its programmatic mission on his legacy of nurturing and supporting the creative and intellectual potential of artists, children and scholars. Established in 1990, two years after Bearden's death, the Foundation is one of the oldest organizations of its kind established by an African American visual artist. The Foundation supports the creative and educational development of young people and of talented and aspiring artists and scholars through its national arts education program geared to educators and students in grades K-12, scholarships for young and economically disadvantaged visual art students and support for practicing artists by way of work and professional development opportunities. In general, the Foundation supports scholarship on Bearden through its exhibition, publication and its national symposium programs that aim to broaden national and international exposure to and increase awareness about his extraordinary art, life and legacy and his significant contributions to American and world art.

The national museum tour, organized by Landau Traveling Exhibitions, Los Angeles, CA, will travel to museums throughout the country through 2012.



Romare Bearden
Falling Star, 1979
Lithograph



Romare Bearden
Out Chorus, 1979-80
Etching, aquatint & serigraph



Romare Bearden
Tropical Flowers, 1971-72
Etching

FROM PROCESS TO PRINT: GRAPHIC WORKS BY ROMARE BEARDEN

Exhibition Loan Info

Contents:

80 framed graphic works by Romare Bearden, including lithographs, etchings, collographs, collograph plates, screen prints, drypoints, aquatints, photo projections, monoprints, and engravings, plus text panels and photomurals

Publications:

A full color, 140 page catalogue by Pomegranate Communications, plus a gallery guide

Programming:

Lecturers and educational programming are available in coordination with the Bearden Foundation

Space Req: 300-400 running feet

Dates Available: Fall 2009-2012

Loan Fee: Upon Request

Exhibition Website: www.a-r-t.com/bearden

Contact Info:

Landau Traveling Exhibitions
3615 Moore St. Los Angeles, CA 90066
Tel: 310-397-3098
Fax: 310-397-3018
Website: www.a-r-t.com
E-mail: info@a-r-t.com

FROM PROCESS TO PRINT: GRAPHIC WORKS BY ROMARE BEARDEN

Exhibition Schedule as of 10/1/09

2009

October 1, 2009 - January 3, 2010
Bowdoin College Museum of Art, Brunswick, ME

2010

January 16 - March 28
Reginald F. Lewis Museum of Maryland African American History and Culture, Baltimore, MD

April 17 - June 27
Chicago Cultural Center, Chicago, IL

August 29 - November 14
Austin Museum of Art, Austin TX

2011

January 21 - April 21 - Reserved
Newport News, VA

May 15 - August 15 - Reserved
Pittsburgh, PA

September 15 - December 31
Nelson Atkins Museum, Kansas City, MO

2012

January 21 - March 21 -OPEN

April 15 - June 15 - OPEN

July 7 - September 7 - OPEN

October 1 - December 31
The Hyde Collection, Glens Falls, NY